

# Better Care Fund

## Stockton Governance Arrangements

11<sup>th</sup> April 2014

Version 4

Status: FINAL DRAFT

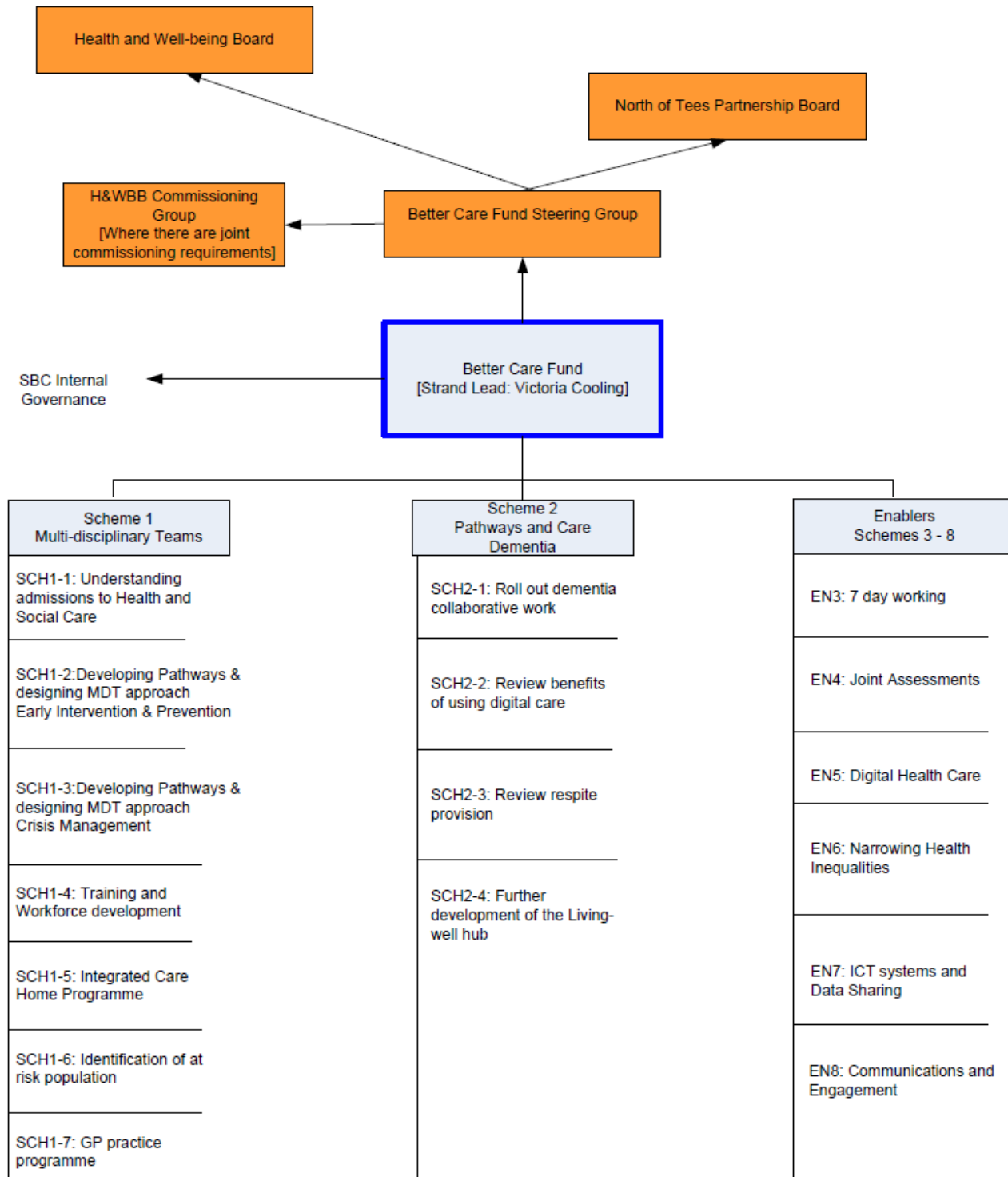


Stockton-on-Tees  
BOROUGH COUNCIL

Adult Services

Big plans for the care we provide

## PROGRAMME MANAGEMENT / GOVERNANCE



This diagram sets out the governance arrangements for the Stockton Better Care Fund (BCF) programme. It is crucial that the development and implementation of the BCF plans are linked to the wider work programme of transformation in Adult Social Care, which includes the

implementation of an efficiency programme and forthcoming Care Bill. Whilst acknowledging that the BCF must have governance arrangements that allow it to operate as an effective partnership with pooled budget arrangements.

**Stockton-on-Tees Health & Wellbeing Board**

- Responsibility for signing off the Better Care Fund (BCF) plans
- Responsible for ensuring BCF plans respond to local needs, align with the Health & Wellbeing Strategy and support system integration across health and social care
- Will agree the use of funding under the Better Care Fund pooled budget arrangements
- Will require assurance on delivery of the BCF plans
- Will help to address any issues arising that relate to the wider Stockton health and social care system
- Will receive regular updates on the implementation of the BCF.

**North of Tees Partnership Board**

- Covers the Hartlepool & Stockton Unit of Planning area and includes NHS Hartlepool and Stockton-on-Tees CCG, North Tees & Hartlepool NHS Foundation Trust, Hartlepool Borough Council, Stockton-on-Tees Borough Council, Tees Esk & Wear Valley Mental Health Foundation Trust
- Will ensure alignment of the Better Care Fund plans with wider strategic plans across health and social care
- Will provide strategic direction and oversight across Hartlepool & Stockton Better Care Funds
- Will co-ordinate and align all cross-organisational activities across the health and social care economy aimed at delivering service change
- Will help to address risks and issues that might impact on the delivery of the Better Care Fund
- Will agree contingency and risk management arrangements in the event that planned schemes do not deliver to projections
- Will coordinate and share how decisions will be taken within partner organisations

**Stockton Adults Health & Wellbeing Commissioning Group**

- Responsible for progressing any joint commissioning requirements arising from the Better Care Fund
- Will receive regular updates on commissioning implications arising from the implementation of the BCF.

**Better Care Fund Steering Group**

- Meetings will commence in May 2014
- Will be chaired by Hartlepool & Stockton CCG
- Responsible for ensuring delivery on the Hartlepool & Stockton BCF plans
- Responsible for agreeing new pathways and models of care
- Responsible for ensuring that partner organisations have taken decisions through their internal governance processes in order for decisions to be made
- Responsible for ensuring each organisation provides sufficient resources to the work streams to ensure successful implementation of the programme
- Responsible for developing a communications strategy – to be approved within each partner organisation

- Will resolve and appropriately escalate issues and risks associated with the Better Care Fund
- Responsible for ensuring other groups are updated and assured of progress.

**Stockton BCF Work Streams**

- Will develop the pathways and models of care under each of the BCF schemes
- Will resolve issues and risks which are within the remit of the project
- Will develop the detailed implementation plans and take day-to-day responsibility for implementation once the new pathways and models of care have been agreed.

**Programme Management Arrangements**

- Strand Lead for BCF – Victoria Cooling, Health Improvement Partnership Manager
- SBC project team – Sean McEneaney, Sue Reay, Liz Hanley, Martin Waters and Victoria Cooling
- Work streams – membership and leads will be established to reflect the needs of individual projects / work areas.

**RISK MANAGEMENT FOR THE STOCKTON BCF**

A risk log and issues log will be created for the overall programme and each individual project will have its own risk log and issues log.

**Project Risk Log / Issue Log**

At project level, risks/issues will be managed by the work streams and the Senior Responsible Owner (SRO) for the project will take responsibility for identifying, recording, monitoring, mitigating and resolving the risks/issues.

If the risk/issue is strategic and has an impact on the overall Better Care Fund programme, the risk/issue will be escalated to the Strand Lead for the Better Care Fund so that it can be included in the programme risks and issues log and referred to the Better Care Fund Steering Group for action.

Internal SBC risks and issues will be managed and resolved by the Project Team in conjunction with the SRO and escalated to the Adults Board where appropriate.

**Programme Risk Log / Issues Log**

The Better Care Fund will have its own risk log. This will be maintained by the Strand Lead for the Better Care Fund. It will be developed, monitored and mitigations agreed by the Better Care Fund Steering Group. The Steering Group will be responsible for resolve risks wherever possible.

If risks cannot be resolved by the Steering Group they will be escalated as follows:

- Risks which can be resolved by individual organisations e.g. FTs, SBC or CCG, then they will be passed to the relevant organisation
- Risks which span organisations will be escalated to the North of Tees Partnership Board

The issues log will work the same way.